



Professional Manufacturer of Inspection Cameras



## Tool Inspection Cameras

- Pipe/Drain Inspection Cameras
- Articulating Video Borescopes
- Cavity Wall Inspection Camera

## ABOUT US

Established in 2008, TvB Tech Co., Ltd. is specialized in designing, R&D, manufacturing and exporting of Inspection cameras. Our main products are pipe inspection cameras, camera locators, articulating video borescopes, etc. Everything we produce is in compliance with all FCC, CE, and RoHS & WEEE Directives.

As the leading manufacturer in this industry on Mainland China, we operate in a 1500 m<sup>2</sup> factory located in Shenzhen. We aim to become a first-class provider of pipe inspection cameras with world renowned quality and stability products, which strives us to keep investing and focusing on product quality control.

TvB Tech has also already been recognized as a strategic partner of many OEM/ODM businesses. We have highly experienced team to work on your OEM/ODM projects. Our experience and splendid service have won us good business relationships with many international buyers and suppliers.

Our products are sold to many countries across the world including Europe, North America, Japan, Korea, Australia, etc. We welcome you to become our next reseller, or agent in your country.

Feel free to contact us if you want a quote.



## How to Choose a Pipe Inspection Camera?

Pipe inspection cameras are widely used by plumbers, contractors, engineers, home inspectors, municipal workers and other professionals for inspecting areas that are hard to see.

### To choose a camera you need to know

- ◆ What sized pipes/sewers/drains you are going to use it in? this is to decide the pipe camera's diameter of camera head, length and size of rod cable, amount of light, etc.
- ◆ Do you need optional features such as built-in Sonde, on-screen distance counter, self-leveling, Keyboard text input, etc. ?
- ◆ How available is service after sale? – TvB Tech has been very professional and efficient in not only producing cameras but also providing high quality after-sale services.

### A glance of TvB Tech Pipe Inspection Cameras

Model	Images	Dia. of Cam	Length of Cable	Thickness of Cable	Fits for Pipe DN	Standard Features	Optional Features
3199F-14mm		Φ14mm	20-40m	Φ4.8mm	Φ20-100mm	Meter counter	Keyboard
3199F-23mm		Φ23mm	20-40m	Φ5.2mm	Φ30-150mm	N/A	Meter counter 512Hz Sonde Self-Leveling Keyboard
3499F		Φ23mm	20-40m	Φ5.2mm	Φ30-150mm	Meter counter Keyboard	512Hz Sonde Self-Leveling
3399F		Φ38mm	40-60m	Φ6.8mm	Φ100-300mm	Meter counter Self-Leveling Keyboard	512Hz Sonde
3299F		Φ38mm	60-120m	Φ9mm	Φ150-300mm	Meter counter Self-Leveling Keyboard	512Hz Sonde

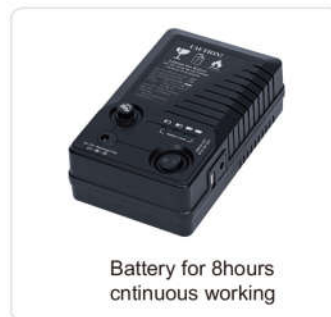
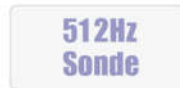
# Video Pipe Inspection Camera

Model No. 3199F-14mm

## 14mm Drain / Pipe Inspection Camera with 20m, 30m or 40m (66, 98 or 131ft) cable



- ◆ 1/4" CMOS camera, 90° vision angle, 720H x 576V pixels
- ◆ Camera Size  $\Phi$ 14mm $\times$ 126mm (without spring)
- ◆ Sapphire glass lens cover, 6 white LEDs
- ◆ Diameter of camera:14mm, Focus Distance 10cm (approx)
- ◆ Water proof level, 10m underwater (camera fix on cable)
- ◆ Push cable dia. 4.8mm
- ◆ with distance counter feature
- ◆ 7" LCD color monitor
- ◆ SD Card slot to store still pictures or record videos
- ◆ One push record button
- ◆ LED brightness control buttons
- ◆ Rechargeable battery lasts up to 8 hours
- ◆ 20m, 30m or 40m(66ft, 98ft or 131ft) fiberglass push rod
- ◆ Rotatable cable reel mounted in case for convenient operation
- ◆ Waterproof ABS suitcase with all parts included



### Specifications

Camera Head		Cable Reel	
Sensor:	CMOS	Material:	Fiberglass rod cable
Head Dimention:	14 mm(dia.) $\times$ 14.5mm (length)	Wheel:	Stainless steel wheel
Camera Material:	304# Stainless Steel	Cable Length:	20, 30 or 40m optional
View Angle:	90 wide angle	Connector:	Gold touch-point connector
Lens Cover:	Sapphire glass	Rotation:	Rotatable in the suitcase
Leds:	6High Bright White LEDs	Wheel diameter:	33cm
Water Proof:	IP68/10m under water	Cable diameter:	4.8mm

### LCD Display and DVR

LCD Resolution:	800*480 pixels
Video Compress:	MPEG-4
Recording:	Video and audio recording
Picture:	Picture shot function
LCD Size:	7 inch
Menu Language:	9 Languages
Panel Control:	Any functions through buttons
External Memory:	SD Card (Max. 32GB)



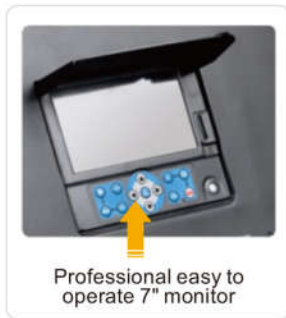
# Video Pipe Inspection Camera

Model No. 3199F-23mm

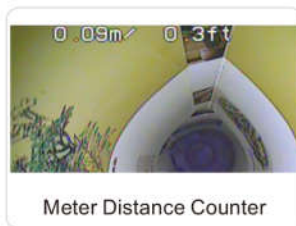
## Drain/pipe Inspection Camera System with 20, 30 or 40m(66, 98 or 131ft)cable



- 1/3 inch Sony CCD camera, 120° wide view angle
- Stainless steel short camera head, IP 68 water proof level
- Sapphire glass lens cover, 12 white LEDs
- Diameter of camera: 23 mm, suitable for pipe dia. 25-200mm(1"-8")
- 20-40M(66-131ft) fiberglass rod cable with stainless reel
- Cable reel rotatable in the case
- One touch record/still images button
- 7" TFT LCD monitor with DVR
- Rechargeable High capacity Li-battery (6600mA) for 8 hours continuous working
- Waterproof ABS suitcase with all parts included
- Optional feature: Meter counter/512Hz Sonde



### Optional Features & Parts



### Specifications

Camera Head		Cable Reel	
Sensor:	1/3" Sony CCD	Material:	Fiberglass rod cable
Head Dimension:	23mm (dia.) × 45mm (length)	Wheel:	Stainless steel wheel
Camera Material:	304# Stainless Steel	Cable Length:	20, 30 or 40m optional
View Angle:	120° wide angle	Connector:	Gold touch-point connector
Lens Cover:	Sapphire glass	Rotation:	Rotatable in the suitcase
Leds:	12 High Bright White LEDs	Wheel diameter:	33cm
Water Proof:	IP68/20m under water	Cable diameter:	5.2mm(0.2")
Focus Distance:	20cm (Approx)		

### LCD Display and DVR

LCD Resolution:	800*480 pixels
Video Compress:	MPEG-4
Recording:	Video and audio recording
Picture:	Picture shot function
LCD Size:	7 inch
Menu Language:	9 Languages
Panel Control:	Any functions through buttons
External Memory:	SD Card (Max. 32GB)



# Video Pipe Inspection Camera

Model No. 3499F

## Drain/pipe Inspection Camera System with 20, 30 or 40m(66, 98 or 131ft)cable



**NEW**

- 1/3 inch Sony CCD camera, 120° wide view angle
- Stainless steel short camera head, IP 68 water proof level
- Sapphire glass lens cover, 12 white LEDs
- Diameter of camera: 23 mm, suitable for pipe dia. 25-200mm
- 20-40M fiberglass rod cable with stainless reel
- One touch record/still images button
- 7" TFT LCD monitor with DVR
- Rechargeable High capacity Li-battery for 5 hours continuous working
- Compact, Rugged and waterproof design



**Sony CCD**

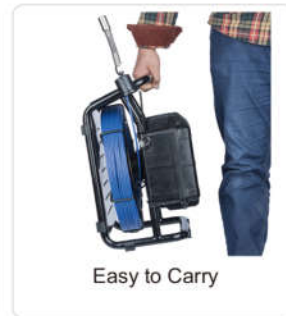


**512Hz Sonde**

**RECORD**

**7 INCH COLOR DISPLAY**

**16:9 WIDESCREEN**



### Specifications

Camera Head		Cable Reel	
Sensor:	1/3" Sony CCD	Material:	Fiberglass rod cable
Head Dimension:	23mm (dia.) ×45mm (length)	Wheel:	Stainless steel wheel
Camera Material:	304# Stainless Steel	Cable Length:	20, 30 or 40m optional
View Angle:	120° wide angle	Connector:	Gold touch-point connector
Lens Cover:	Sapphire glass	Rotation:	Rotatable in the suitcase
Leds:	12 High Bright White LEDs	Wheel diameter:	33cm
Water Proof:	IP68/20m under water	Cable diameter:	5.2mm(0.2")
Focus Distance:	20cm (Approx)		
LCD Display and DVR			
LCD Resolution:	800*480 pixels		
Video Compress:	MPEG-4		
Recording:	Video and audio recording		
Picture:	Picture shot function		
LCD Size:	7 inch		
Menu Language:	9 Languages		
Panel Control:	Any functions through buttons		
External Memory:	SD Card (Max. 32GB)		



# Video Pipe Inspection Camera

Model No. 3399F

## Drain/pipe Inspection Camera System with 40m, 50m or 60m(131,164 or 197ft) cable



### Camera Head:

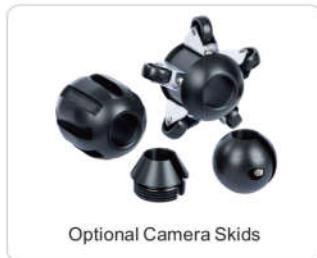
- ◆ Material: #304 Stainless Steel
- ◆ Dimension:  $\varnothing$  38mm×81mm ( Main body )
- ◆ Sensor: 1/3" Sony CCD, 480 TV Lines
- ◆ View Angle: 120°
- ◆ Focal Distance: 12-120cm
- ◆ Two Roller Skids, Mini one at dia.72mm, another universal skid at dia. 115-250mm
- ◆ LEDs: 12pcs high light LEDs
- ◆ Waterproof: Max. 20m under water
- ◆ Built-in 512Hz Sonde (optional)
- ◆ With self-leveling feature

### Cable:

- ◆ Cable dia. 6.8 mm(0.27")
- ◆ Cable length: 40/50/60m for option

### Monitor:

- ◆ 7" LCD color TFT LCD
- ◆ With universal installation brackets
- ◆ SD Card slot to store still pictures or videos
- ◆ One push record button
- ◆ Built-in rechargeable battery lasts up to 5 hours
- ◆ On-Screen date and time
- ◆ On-screen meter/ft. distance display



## Specifications

### Camera Head

Material:	#304 Stainless Steel
Dimension:	$\varnothing$ 38mm×81mm ( Main body )
Sensor:	1/3" Sony CCD, 480 TV Lines
View Angle:	120°
Focal Distance:	12-120cm (4.7-45")
Two Roller Skids, Mini one at dia.70mm(27.5"), another universal skid at dia. 120-250mm (4.72"- 9.84")	
Saphire glass for scratch proof	
LEDs:	12pcs high light LEDs
Waterproof:	Max. 20m(65') under water
Built-in 512Hz Sonde (optional)	
With self-leveling	

### Push Cable

Cable dia. 6.8 mm	
Cable Material:	Fiberglass
Available length:	40/50/60m(131/164/197ft)
Wheel material:	Stainless steel

### Monitor

7" 16:9 high definition color LCD monitor	One push record button
Resolution: 800*480 R.G.B.	Built-in rechargeable battery
Encoding: H.264	Work time: 4-5 hours
With universal installation bracket	Charge time: 6-7 hours
SD Card slot to store still images or videos	On-Screen date and time
Local audio recording	On-screen meter/ft. distance display
Menu Language: English, German, French, Spanish, Italian, Chinese, Japanese, Russian, Portuguese	

# Video Pipe Inspection Camera

Model No. 3299F

## Drain/pipe Inspection Camera System with 60~120m (195~394ft) cable



### Camera Head:

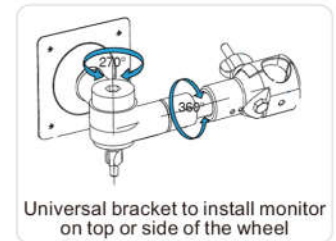
- Material: #304 Stainless Steel
- Dimension:  $\phi$  38mm $\times$ 81mm (Main body)
- Sensor: 1/3" Sony CCD, 480 TV Lines
- View Angle: 120°
- Focal Distance: 12-120cm
- Two Roller Skids, Mini one at dia.72mm, another universal skid at dia. 115-250mm
- LEDs: 12pcs high light LEDs
- Waterproof: Max. 20m under water
- Built-in 512Hz Sonde (optional)
- With self-leveling feature

### Cable:

- Cable dia. 9mm(0.35")
- Cable length: 60/80/100/120m for option (197/262/328/394ft)

### Monitor:

- 7" LCD color TFT LCD
- SD Card slot to store still pictures or videos
- One push record button
- Built-in rechargeable battery lasts up to 5 hours
- On-Screen date and time
- On-screen meter/ft. distance display



## Specifications

### Camera Head

Material:	#304 Stainless Steel
Dimension:	$\phi$ 38mm $\times$ 81mm (Main body)
Sensor:	1/3" Sony CCD, 480 TV Lines
View Angle:	120°
Focal Distance:	12-120cm(4.71"-47")
Two Roller Skids, Mini one at dia.72mm, another universal skid at dia. 115-250mm	
Sapphire glass for scratch proof	
LEDs:	12pcs high light LEDs
Waterproof:	Max. 20m(65') under water
Built-in 512Hz Sonde (optional)	
With self-leveling	

### Push Cable

Cable dia. 9mm	
Cable Material:	Fiberglass
Available length:	60/80/100/120m (197/262/328/394ft)
Wheel material:	Stainless steel

### Monitor

7" 16:9 high definition color LCD monitor	One push record button
Resolution: 800 $\times$ 480 R.G.B.	Built-in rechargeable battery
Encoding: H.264	Work time: 4-5 hours
With universal installation bracket	Charge time: 6-7 hours
SD Card slot to store still images or videos	On-Screen date and time
Local audio recording	On-screen meter/ft. distance display
Menu Language:English, German, French, Spanish, Italian, Chinese, Japanese, Russian, Portuguese	



## 512Hz Locator

Model No. P512R



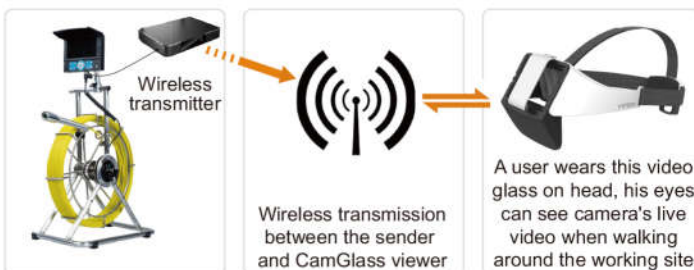
The 512hz wireless locator is a scanner used to find the position of the camera head (with 512Hz transmitter inside). It is a powerful tool that helps you to locate the exact place of the problems in a pipe.

**Main features:**

- ◆ Distance: 4m
- ◆ Frequency: 512hz
- ◆ Power supply: 6\*AA
- ◆ Current: <100mA
- ◆ Operation Mode: NORM/NOISE
- ◆ Sensitivity: NEAR/FAR continuous adjustable
- ◆ Output intensity: LCD 15 levels
- ◆ Size: 100\*10\*10mm
- ◆ Weight: 800g
- ◆ Operation Temperature: -10-50°C

## CamGlass Pipe Inspection Camera Viewer

The CamGlass is a wireless camera video viewer that can be worn on head. By using this tool you can view the camera's image anytime while you are moving around the working site. Viewing camera's video is now way more convenient than by staring at the camera's LCD monitor. Besides, your eyes are not fully hidden behind the video glass, out of the corner of your eye will ensure your safety on the working site.



**Basic Specs :**

- ◆ Frequency: 5.8GHz
- ◆ Wireless transmission Distance: 10m
- ◆ Operating Temperature: -10-50°C
- ◆ Voltage: 12V In



### Cavity Wall Inspection Camera

Model No. 4908AL

This is a side view rigid inspection camera that is specially designed for cavity wall inspection, wall tie and dry rot inspection, inspection of spaces under floors, above ceilings and behind panels and ducts, and many more where a rigid side view endoscope is required.

**Features:**

- ◆ 2.4Ghz wireless transmission between camera and monitor
- ◆ Mini stainless steel insertion tube, dia.: 9mm
- ◆ Tube length 300mm
- ◆ Side view camera head, 380TVL
- ◆ 2 high intensity LEDs on camera head, providing light up to 1.5 meters
- ◆ Video out function
- ◆ 3.5" TFT-LCD wireless monitor with SD card recording (Max. SD card: 32GB)
- ◆ Waterproof level: IP67 (camera tube only)
- ◆ Built-in Rechargeable Li-battery for both camera and monitor

### 2-Way Articulating Video Boroscope with Rigid Tube

Model No. H5805AL

- ◆ Camera Head: 14mm, 720\*625 pixels, 4 white LEDs
- ◆ Tube: Stainless steel, length 63cm
- ◆ Articulation: 2 way, 300 degrees
- ◆ 3.5" LCD wireless monitor with SD card recording



### 2-Way Articulating Video Boroscope with Flexible Tube

Model No. H5806AL

- ◆ Camera Head: 5.8mm, 640\*480 pixels, 4 white LEDs
- ◆ Tube: Flexible, 1m length
- ◆ Articulation: 2 way, 300 degrees
- ◆ 3.5" LCD wireless monitor with SD card recording



## Budget Endoscope Camera

Model No. GL9008

This Budget Endoscope Camera comes with very competitive prices. Featured light weight and handheld, it's a very useful small tool for home, automotive and industrial inspections.

**Features:**

- ◆ Video out function for viewing in big screens
- ◆ Image flip function to view in different angles
- ◆ 2.31" TFT-LCD color monitor, brightness adjustable
- ◆ Mini 8mm waterproof camera with flexible extended tube
- ◆ Manufactured and tested to IP67 waterproof standard
- ◆ Requires 4 AA batteries for camera power supply
- ◆ 3 useful accessories included: hook, mirror and magnet
- ◆ LED brightness is adjustable



Image-flip



LCD screen



Camera shaft



Hiquality

## PocketScope Endoscope Camera

Model No. V5500

This is a real pocket size video endoscope camera, its compact design allows you to coil the 1m camera tube inside the product.

**Features:**

- ◆ HD 720P Resolution
- ◆ 5.5mm flexible tube
- ◆ 6 White Leds
- ◆ 3 Inch LCD display
- ◆ Support MicroSD card for still image capture and video recording
- ◆ Comes with a flashlight
- ◆ Handheld and durable design
- ◆ Small accessories - hook, mirror and magnet

